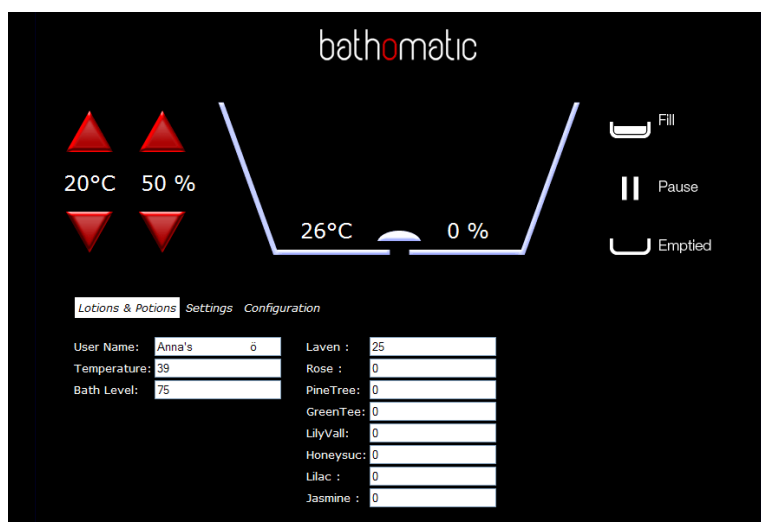
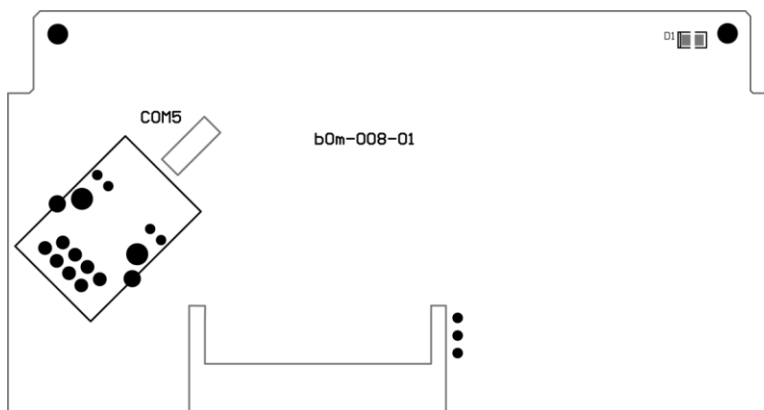


bathomatic® Web Server Installation Guide – rev. 001



Contents

Introduction	3
Hardware installation	3
Software Configuration	3

Introduction

The Web Server board bom-008-01 allows connection between bathomatic® and the LAN. The correct configuration of this board is critical for the remote control of bathomatic® and the instructions below will help you in the configuration process.

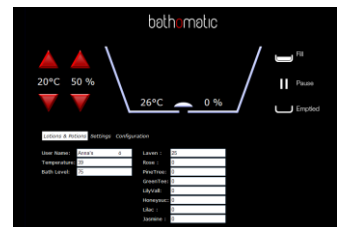
Hardware installation

1. Turn power OFF
2. Remove bom master controller cover
3. Insert Web Server board bom-008-01
4. Connect COM5 to LAN via standard CAT5 cable
5. Turn power ON

Software Configuration

1. Find bathomatic's IP address
 - a. Use an IP Scanner from a PC connected on the same network as bathomatic®or
 - b. Scan the network with our "[Q devices](#)" for iPhone which is free from Apple Store. This is an easy option when you have iPhone (iPod Touch) connected via WiFi on the same network as bathomatic®

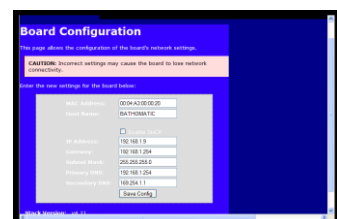
2. Access bathomatic® via LAN. Type the IP address of the bathomatic® into the browser address bar¹ and the bathomatic® web page will appear. From this page you can gain full control over bathomatic®. From running a bath to new settings, renaming user presets and settings to IP configuration Changes.



3. IP configuration Changes. The bathomatic® Network Board is on DHCP by default, but the IP address can be made static. Once you access the bathomatic® web server you need to enter "Configuration"² by typing the default User Name "admin" and Password "b4th0mat1c".



Here you can make and save your desired settings



¹ Example <http://192.168.1.9>

² Only attempt Configuration changes if you are an advanced user